

**ESD Compartments**  
**Parting inserts | Interlayers**  
Individual packaging solutions



# Play it safe!

The products of the EPAstore<sup>®</sup> series ensure ESD safety during the storage and transport of components and assemblies. We offer you a wide range of 200 different standard solutions for your Euro and KLT containers in order to meet your individual packaging solutions.

Our three different permanently conductive materials and thicknesses provide reliable protection against electrostatic discharges.



## Parting inserts / Compartments for containers PP PS PE



Parting inserts for dividing containers into any compartment sizes.

## Interlayers for containers PP PS PE PP/PE



For use in transport containers to transport or store electronic components in an orderly manner and in layers.

Protect your products with ESD-compliant packaging. Store sensitive components and parts space-saving and protected in ESD Euro containers with parting inserts and interlayers.

## Material information



**PP**

### PP – Polypropylene, extruded



#### Cavity material – weight-saving

High abrasion resistance, low weight, thickness 3.0 mm | 600 g/m<sup>2</sup>, thickness 3.5 mm | 800 g/m<sup>2</sup>, volume conductive, typical surface resistance:  $R_s = 10^4 - 10^6 \text{ Ohm}$ .



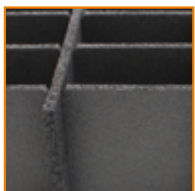
**PS**

### PS – Polystyrene



#### Solid material – resilient

High abrasion resistance, high stability, volume conductive, typical surface resistance:  $R_s = 10^4 - 10^6 \text{ Ohm}$ .



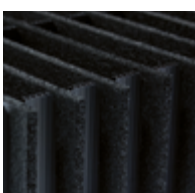
**PE**

### PE – Polyethylene



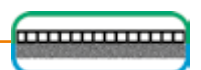
#### Foam – cushioning

Abrasion-resistant and corrosion-free, especially low weight, thickness 3 mm / 6 mm / 10 mm, electrostatically dissipative (suitable as interlayers and compartments for containers), typical surface resistance:  $R_s = 10^5 - 10^8 \text{ Ohm}$ .



**PP/PE**

### PP/PE – Polypropylene/Polyethylene material mix



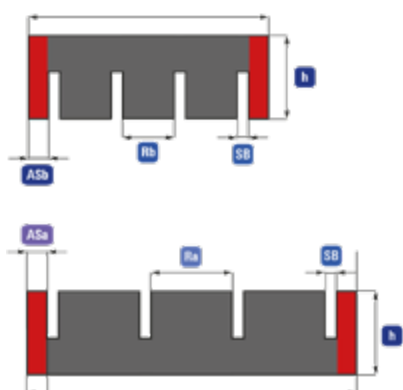
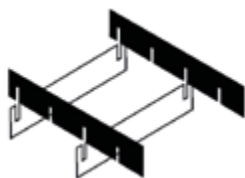
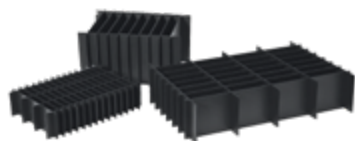
#### Cavity material /foam – weight-saving and cushioning

For maximum stability and protection at the same time. Due to its stability and lightness, the PP component offers optimal properties in application. The soft PE foam protects sensitive components and products from sharp edges and impacts.

# Parting inserts/Compartments for Euro Containers

With the parting inserts, you can divide your containers into any compartment size. These are optionally made of different materials and are available at short notice – even in small quantities – from stock in various designs for **Euro and KLT containers** in the sizes **400 x 300 mm** and **600 x 400 mm**.

You can also find all parting inserts in our general catalog or in our online shop under [www.compumet.ch](http://www.compumet.ch).



PP



PS



## Standard inserts

### Standard versions and technical characteristics

We offer standard solutions for compartments in various dimensions, thicknesses and grid spacing properties. The most commonly used containers with compartments are 400 x 300 mm and 600 x 400 mm Euro containers in different heights.

### Easy installation makes it easy to adjust the parting inserts for all applications

For space-saving shipping, we will supply you with your compartments bundled for self-assembly.

On request, we will also be happy to assemble your compartments for you or send them directly in combination with an order of suitable Euro containers.

<b>H</b>	Height of the partition (standard in 80, 120 oder 180 mm)
<b>L</b>	Length of the partition (standard in 253, 353 oder 553 mm)
<b>Rb/Ra</b>	Grid spacing
<b>ASb/ASa</b>	External support (if available)
<b>SB</b>	Sloth width

### Compartments with cavity material

**Standard side lengths:** 253 / 353 / 553  
**Partition heights:** 80 / 120 / 180 mm  
**Material thickness/weight:** 3.0 mm (Gewicht 600 g/m<sup>2</sup>)

- More than 100 standard types of PP compartments to choose from
- Material thickness 3.5 mm (weight 800 g/m<sup>2</sup>) on request

### Compartments with solid material

**Standard side lengths:** 253 / 353 / 553  
**Partition heights:** 80 / 120 / 180 mm  
**Material thickness/weight:** 1.85 mm

- More than 80 standard types of PS compartments to choose from
- Material thickness 1.5 mm on request

## Configurator for Parting inserts/Compartments

In order to meet the ever-increasing requirements in electronics manufacturing, you should protect your components from electrostatic discharge. With the ESD-compliant compartments for containers, you can improve the safety of your products during storage and transport.

In addition to the standard designs, we are also happy to supply you with parting inserts/compartments for your individual application. This means that even non-standardized containers can be easily equipped with parting inserts/compartments. Any grid width in mm and partition heights from 20 mm can be implemented according to customer requirements.



Scan the QR code and use our online configurator to create your desired product conveniently.  
[www.compumet.ch/KonG](http://www.compumet.ch/KonG)

[Test now](#)



### Possible individual combinations of cut-outs and material

**PP** | Material  
Hohlkammer

**PS** | Material  
Vollmaterial

**PE** | Material  
Schaumstoff



**Typ E**  
No cut-outs

**PP PS PE**



**Typ A**  
Cut-outs,  
semicircular 34 x 17 mm

**PP PS PE**



**SL**  
Customer specific  
special solution

**PP PS PE**

In the configurator, you can also equip all parting inserts with any viewing recesses as well as cut-outs for easier removal of the stored materials and adapt them to any application.

## Configurator for Hot stamping/Printing

Emboss or print your compartments or interlayers with your own logo or desired text. Our practical online configurator helps you to easily and quickly create the hot stamping or printing on your desired product. In hot stamping, the printed image is transferred from a special film to the material to be printed by heat and pressure during the printing process.

[Give it a try](#)



Scan the QR code and use our online configurator to create your desired product conveniently.  
[www.compumet.ch/bedruckung](http://www.compumet.ch/bedruckung)







# Interlayers for Standard Solutions

In our product range you will find a large selection of interlayers in standard sizes which are designed for most Euro containers, but also in customer-specific formats. Our interlayers are suitable as a stable, abrasion-resistant and, above all, reusable interlayer/insert and are used, among other things, for load securing. Resources are saved to a considerable extent.

Perfect integration into automated production processes is another argument in favor of using interlayers. The interlayers are easy to use and available in different designs which differ in material, cut-outs, thickness and dimensions.



## Material thickness

For use in standard transport containers 400 x 300 mm, 600 x 400 mm und 800 x 600 mm

### Polypropylene (PP)



2 thicknesses available:

- **3.0 mm**, weight 600 g/m<sup>2</sup> **dpvlink 15146**
- **3.5 mm**, weight 800 g/m<sup>2</sup> (extra stabil) **dpvlink 705**

Typical surface resistance  $R_s = 10^4 - 10^6 \text{ Ohm}$

### Polystyrene (PS)



2 thicknesses available:

- **1.5 mm** **dpvlink 15144**
- **1.85 mm** **dpvlink 15145**

Typical surface resistance  $R_s = 10^4 - 10^6 \text{ Ohm}$

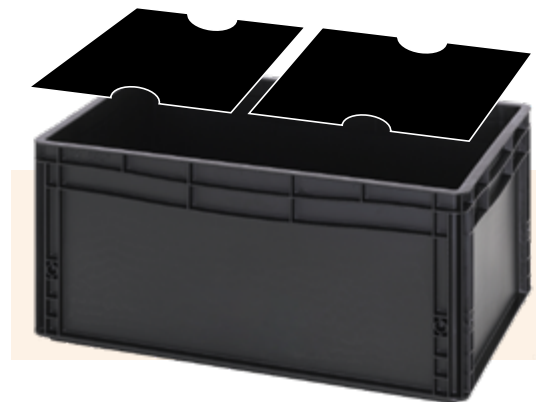
### Polyethylene (PE)



3 thicknesses available:

- **3.0 mm, 6.0 mm, 10.0 mm** **dpvlink 700/ dpvlink 702**

Typical surface resistance  $R_s = 10^5 - 10^8 \text{ Ohm}$  (dissipative)



Scan the QR code and find more information online. Simply enter the number of the green **dpvlink** in the search field under **compumet.ch**. Or take a look at page 307 of the catalog.



# Cut-outs for Interlayers



Interlayer		Type D (Standard)	Type A	Type B	Type C	Type E
Cut-outs		2 corners sloped	2 x semicircular 34 x 17 mm	2 x rectangular 40 x 20 mm	2 x round Ø 25/30 mm	without cut-outs
Polypropylene	PP	✓	✓	—	✓	✓
Polystyrene	PS	✓	✓	✓	✓	✓
Polyethylene	PE	✓	✓	✓	✓	✓
PP with glued-on PE foam	PP PE	✓	—	—	—	—

## Configurator for Interlayers

Fix your products and protect them from damage in transit. If you can't find what you're looking for in our standard sizes, you can quickly and easily design your own perfectly tailored interlayer. These are then manufactured directly in-house for you.



Give it a try



Scan the QR code and use our online configurator to create your desired product conveniently.  
[www.compumet.ch/KonZ](http://www.compumet.ch/KonZ)



**EPA<sup>®</sup>store**

Are you looking for the right solution for your container?

Get an overview of our offer and test our configurator.

**Our Compumet team will be happy to assist you**



# Your System Supplier for Electronics Manufacturing



**ESD  
Management**

**Compumet AG**  
**Theodorshofweg 22**  
**4310 Rheinfelden, Switzerland**

Phone: +41 (0)61 836 10 50  
E-Mail: [info@compumet.ch](mailto:info@compumet.ch)  
Internet: [www.compumet.ch](http://www.compumet.ch)



**ESD  
Systems**

## **Your Contact:**

**SWITZERLAND | LIECHTENSTEIN**

### **Compumet AG**

Phone: +41 (0)61 836 10 50  
E-Mail: [info@compumet.ch](mailto:info@compumet.ch)



**ESD Storage systems  
& ESD packaging**

**EUROPE | INTERNATIONAL**

### **DPV Elektronik-Service GmbH**

Herrengrundstr. 1  
75031 Eppingen, Germany

Phone: +49 (0)7262 9163-200  
E-Mail: [export@dpv-elektronik.de](mailto:export@dpv-elektronik.de)  
Internet: [www.dpv-elektronik.de](http://www.dpv-elektronik.de)



**ESD Tools**



**Systems for  
component processing**



**Mounting systems**



**Soldering systems**